

CROP CONDITION & DEVELOPMENT STAGES

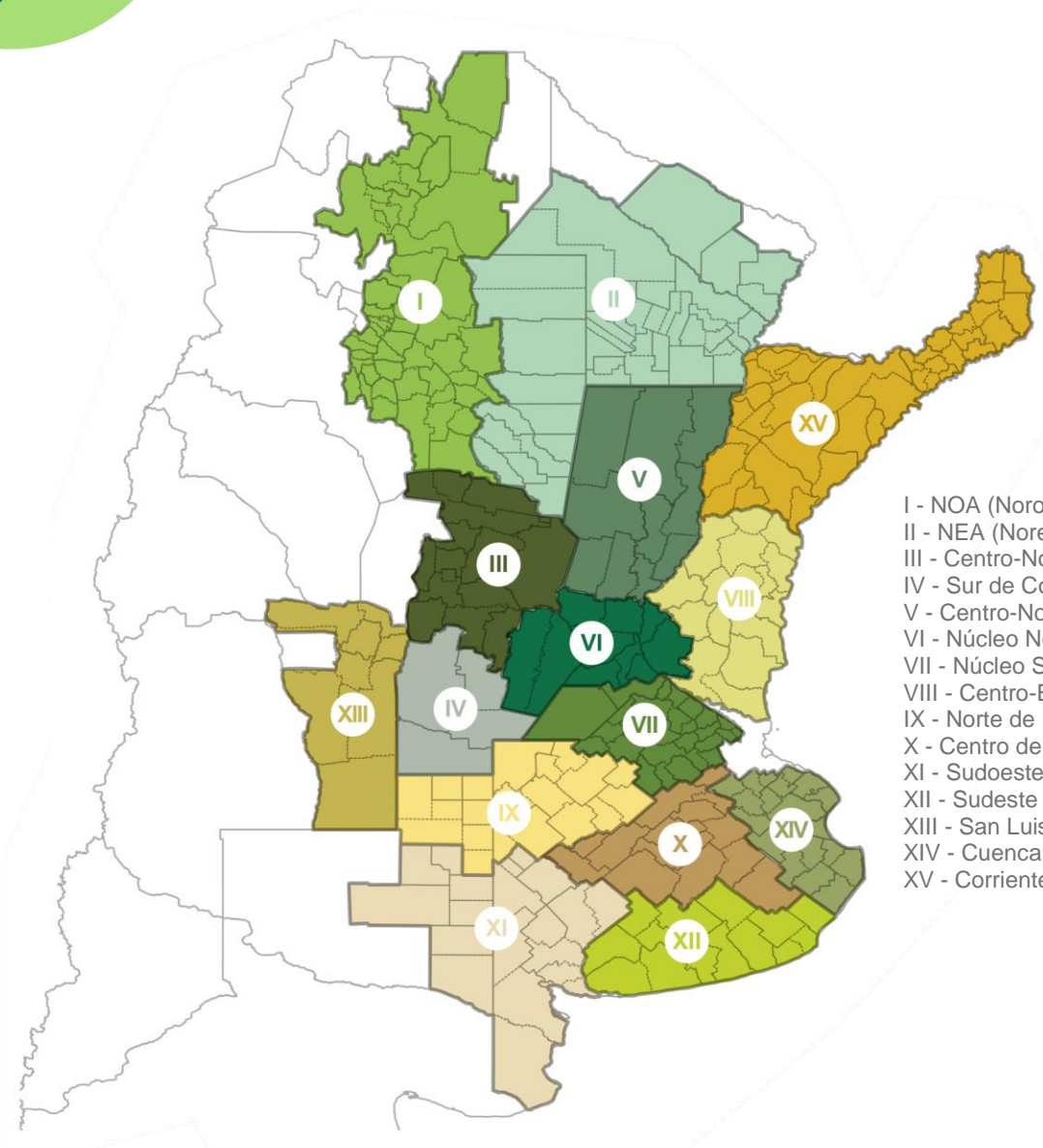
NOVEMBER, 23
2017



BUENOS AIRES GRAIN EXCHANGE
DEPARTMENT OF AGRICULTURAL
ESTIMATES

ISSN 2591-4715

DEPARTMENT & REGIONS



- I - NOA (Noroeste Argentino)
- II - NEA (Noreste Argentino)
- III - Centro-Norte de Córdoba
- IV - Sur de Córdoba
- V - Centro-Norte de Santa Fe
- VI - Núcleo Norte
- VII - Núcleo Sur
- VIII - Centro-Este de Entre Ríos
- IX - Norte de La Pampa - Oeste de Buenos Aires
- X - Centro de Buenos Aires
- XI - Sudoeste de Buenos Aires - Sur de La Pampa
- XII - Sudeste de Buenos Aires
- XIII - San Luis
- XIV - Cuenca del Salado
- XV - Corrientes - Misiones

HEAD OF DEPARTMENT

Eng. Esteban J Copati
ecopati@bc.org.ar

COORDINATOR

Eng. Gonzalo Hermida
ghermida@bc.org.ar

CROP ANALYST

Martin López
martinlopez@bc.org.ar

SATELLITE IMAGES ANALYST

Eng. María Victoria Corte
mcorte@bc.org.ar

CROP CONDITION ANALYST

Daniela Venturino
dventurino@bc.org.ar
Wheat & Sunflower

Santiago Burrone
sburrone@bc.org.ar
Corn

Eng. Ayelén Gago
amgago@bc.org.ar
Soybean

CONTACT

Av. Corrientes 123
C1043AAB - CABA
Phone: +54 11 4515 8200 | 8300
estimacionesagricolas@bc.org.ar
Twitter: @estimacionesbc

ISSN 2591-4715

CROP CONDITION & DEVELOPMENT STAGES

Findings of the survey conducted through November 22, 2017 by the Agricultural Estimates Department at the Grain Exchange. The areas under analysis in this report account for 90% of the crops planted area. The regional data is published once planting reaches 100% of the projected area.

Wheat

Wheat Condition: as of November 22, 2017

Regions	Very Poor %	Poor %	Fair %	Good %	Excellent %
I NOA	-	50,0	40,0	10,0	-
II NEA	-	25,0	45,0	15,0	15,0
III Ctro N Cba	15,0	15,0	35,0	20,0	15,0
IV S Cba	-	-	20,0	25,0	55,0
V Ctro N SFe	-	10,0	40,0	25,0	25,0
VI Núcleo Norte	-	20,0	15,0	20,0	45,0
VII Núcleo Sur	10,0	20,0	25,0	30,0	15,0
VIII Ctro E ER	-	-	-	-	-
IX N LP-OBA	-	20,0	25,0	55,0	-
X Ctro Bs As	-	-	30,0	70,0	-
XI SO BA-S LP	-	20,0	30,0	40,0	10,0
XII SE BA	-	10,0	40,0	30,0	20,0
XIII San Luis	-	-	-	-	-
XIV Cuenca Sal	-	-	-	-	-
XV Others	-	-	-	-	-
National	3,3	21,1	30,0	26,7	18,9

Wheat Moisture Condition: as of November 22, 2017

Regions	Dry %	Poor %	Favourable %	Optimum %	Wet %
I NOA	20,0	65,0	15,0	-	-
II NEA	30,0	45,0	20,0	5,0	-
III Ctro N Cba	-	42,9	42,9	14,2	-
IV S Cba	10,0	40,0	30,0	20,0	-
V Ctro N SFe	-	20,0	40,0	40,0	-
VI Núcleo Norte	-	10,0	75,0	15,0	-
VII Núcleo Sur	-	25,0	50,0	25,0	-
VIII Ctro E ER	-	-	-	-	-
IX N LP-OBA	-	-	40,0	50,0	10,0
X Ctro Bs As	-	-	30,0	50,0	20,0
XI SO BA-S LP	-	-	40,0	45,0	15,0
XII SE BA	-	15,0	55,0	20,0	10,0
XIII San Luis	-	-	-	-	-
XIV Cuenca Sal	-	-	-	-	-
XV Others	-	-	-	-	-
National	4,9	26,9	42,5	21,6	4,2

CROP CONDITION & DEVELOPMENT STAGES

Wheat Steam Extension: as of November 22, 2017

Regions		November 23, 2016 %	November 8, 2017 %	November 22, 2017 %	2012/2017 Average %
I	NOA	100,0	100,0	100,0	100,0
II	NEA	100,0	100,0	100,0	100,0
III	Ctro N Cba	100,0	100,0	100,0	100,0
IV	S Cba	100,0	100,0	100,0	100,0
V	Ctro N SFe	100,0	100,0	100,0	100,0
VI	Núcleo Norte	100,0	100,0	100,0	100,0
VII	Núcleo Sur	100,0	100,0	100,0	100,0
VIII	Ctro E ER	-	-	-	-
IX	N LP-OBA	100,0	100,0	100,0	100,0
X	Ctro Bs As	100,0	97,0	100,0	100,0
XI	SO BA-S LP	100,0	79,0	100,0	100,0
XII	SE BA	100,0	72,0	100,0	100,0
XIII	San Luis	-	-	-	-
XIV	Cuenca Sal	-	-	-	-
XV	Others	-	-	-	-
National		100,0	94,8	100,0	100,0

Wheat Heading: as of November 22, 2017

Regions		November 23, 2016 %	November 8, 2017 %	November 22, 2017 %	2012/2017 Average %
I	NOA	100,0	100,0	100,0	100,0
II	NEA	100,0	100,0	100,0	100,0
III	Ctro N Cba	100,0	100,0	100,0	100,0
IV	S Cba	97,0	75,0	100,0	95,0
V	Ctro N SFe	100,0	100,0	100,0	100,0
VI	Núcleo Norte	100,0	88,0	100,0	100,0
VII	Núcleo Sur	99,0	75,0	99,0	98,0
VIII	Ctro E ER	-	-	-	-
IX	N LP-OBA	90,0	65,0	97,0	91,5
X	Ctro Bs As	92,0	57,0	93,0	90,0
XI	SO BA-S LP	75,0	51,0	87,0	76,1
XII	SE BA	76,0	45,0	83,0	77,1
XIII	San Luis	-	-	-	-
XIV	Cuenca Sal	-	-	-	-
XV	Others	-	-	-	-
National		92,4	78,2	96,0	88,0

CROP CONDITION & DEVELOPMENT STAGES

Wheat Ripening: as of November 22, 2017

Regions		November 23, 2016 %	November 8, 2017 %	November 22, 2017 %	2012/2017 Average %
I	NOA	100,0	97,0	100,0	100,0
II	NEA	98,0	82,0	100,0	95,0
III	Ctro N Cba	84,0	61,0	85,0	85,0
IV	S Cba	61,0	25,0	62,0	60,0
V	Ctro N SFe	100,0	80,0	100,0	100,0
VI	Núcleo Norte	77,0	55,0	75,0	75,0
VII	Núcleo Sur	64,0	29,0	53,0	65,0
VIII	Ctro E ER	-	-	-	-
IX	N LP-OBA	49,0	-	33,0	50,0
X	Ctro Bs As	42,0	-	29,0	39,0
XI	SO BA-S LP	24,0	7,0	17,0	25,0
XII	SE BA	17,0	-	12,0	14,4
XIII	San Luis	-	-	-	-
XIV	Cuenca Sal	-	-	-	-
XV	Others	-	-	-	-
National		61,2	39,9	60,4	48,6

Wheat Mature: as of November 22, 2017

Regions		November 23, 2016 %	November 8, 2017 %	November 22, 2017 %	2012/2017 Average %
I	NOA	97,0	76,0	100,0	95,0
II	NEA	80,0	55,0	95,0	78,0
III	Ctro N Cba	53,0	17,0	40,0	55,4
IV	S Cba	38,0	-	30,0	35,0
V	Ctro N SFe	69,0	28,0	68,0	70,0
VI	Núcleo Norte	41,0	12,0	37,0	38,0
VII	Núcleo Sur	29,0	-	23,0	31,4
VIII	Ctro E ER	-	-	-	-
IX	N LP-OBA	15,0	-	7,0	14,3
X	Ctro Bs As	3,0	-	-	2,5
XI	SO BA-S LP	-	-	-	-
XII	SE BA	-	-	-	-
XIII	San Luis	-	-	-	-
XIV	Cuenca Sal	-	-	-	-
XV	Others	-	-	-	-
National		33,6	14,6	33,7	22,8

CROP CONDITION & DEVELOPMENT STAGES

Wheat Harvested: as of November 22, 2017

Regions		November 23, 2016 %	November 8, 2017 %	November 22, 2017 %	2012/2017 Average %
I	NOA	92,0	60,0	95,0	96,5
II	NEA	85,0	50,0	89,0	95,2
III	Ctro N Cba	25,0	2,0	18,0	45,0
IV	S Cba	8,0	-	4,0	4,7
V	Ctro N SFe	45,0	6,0	55,0	65,3
VI	Núcleo Norte	10,0	-	15,0	32,3
VII	Núcleo Sur	6,0	-	2,0	4,0
VIII	Ctro E ER	-	-	-	-
IX	N LP-OBA	-	-	-	0,2
X	Ctro Bs As	-	-	-	-
XI	SO BA-S LP	-	-	-	-
XII	SE BA	-	-	-	-
XIII	San Luis	-	-	-	-
XIV	Cuenca Sal	-	-	-	-
XV	Others	-	-	-	-
National		17,7	7,8	20,6	22,2

Sunflower

Sunflower Planted: as of November 22, 2017

♀		November 23, 2016 %	November 8, 2017 %	November 22, 2017 %	2012/2017 Average %
I	NOA	-	-	-	-
II	NEA	100,0	100,0	100,0	100,0
III	Ctro N Cba	100,0	100,0	100,0	100,0
IV	S Cba	100,0	95,0	100,0	100,0
V	Ctro N SFe	100,0	100,0	100,0	100,0
VI	Núcleo Norte	100,0	100,0	100,0	100,0
VII	Núcleo Sur	100,0	92,0	100,0	100,0
VIII	Ctro E ER	100,0	100,0	100,0	100,0
IX	N LP-OBA	92,0	60,0	95,0	98,4
X	Ctro Bs As	95,0	58,0	90,0	97,0
XI	SO BA-S LP	75,0	32,0	70,0	87,4
XII	SE BA	88,0	55,0	88,0	93,0
XIII	San Luis	100,0	95,0	100,0	96,6
XIV	Cuenca Sal	100,0	70,0	95,0	99,8
XV	Others	100,0	100,0	100,0	100,0
National		90,6	69,0	90,1	94,5

CROP CONDITION & DEVELOPMENT STAGES

Sunflower Condition: as of November 22, 2017

Regions	Very Poor %	Poor %	Fair %	Good %	Excellent %
I NOA	-	-	-	-	-
II NEA	-	16,6	16,7	50,0	16,7
III Ctro N Cba	-	-	-	-	-
IV S Cba	-	-	-	-	-
V Ctro N SFe	-	-	42,9	52,1	5,0
VI Núcleo Norte	-	-	-	-	-
VII Núcleo Sur	-	-	-	-	-
VIII Ctro E ER	-	-	-	-	-
IX N LP-OBA	-	-	-	-	-
X Ctro Bs As	-	-	-	-	-
XI SO BA-S LP	-	-	-	-	-
XII SE BA	-	-	-	-	-
XIII San Luis	-	-	-	-	-
XIV Cuenca Sal	-	-	-	-	-
XV Others	-	-	-	-	-
National	0,1	4,4	19,2	71,2	5,1

Sunflower Moisture Condition: as of November 22, 2017

Regions	Dry %	Poor %	Favourable %	Optimum %	Wet %
I NOA	-	-	-	-	-
II NEA	-	25,0	50,0	25,0	-
III Ctro N Cba	-	-	-	-	-
IV S Cba	-	-	-	-	-
V Ctro N SFe	-	14,3	57,1	28,6	-
VI Núcleo Norte	-	-	-	-	-
VII Núcleo Sur	-	-	-	-	-
VIII Ctro E ER	-	-	-	-	-
IX N LP-OBA	-	-	-	-	-
X Ctro Bs As	-	-	-	-	-
XI SO BA-S LP	-	-	-	-	-
XII SE BA	-	-	-	-	-
XIII San Luis	-	-	-	-	-
XIV Cuenca Sal	-	-	-	-	-
XV Others	-	-	-	-	-
National	-	10,4	57,3	31,7	0,6

CROP CONDITION & DEVELOPMENT STAGES

Sunflower Leaf Development: as of November 22, 2017

Regions		November 23, 2016 %	November 8, 2017 %	November 22, 2017 %	2012/2017 Average %
I	NOA	-	-	-	-
II	NEA	100,0	100,0	100,0	100,0
III	Ctro N Cba	-	-	-	-
IV	S Cba	-	-	-	-
V	Ctro N SFe	100,0	100,0	100,0	100,0
VI	Núcleo Norte	-	-	-	-
VII	Núcleo Sur	-	-	-	-
VIII	Ctro E ER	-	-	-	-
IX	N LP-OBA	-	-	-	-
X	Ctro Bs As	-	-	-	-
XI	SO BA-S LP	-	-	-	-
XII	SE BA	-	-	-	-
XIII	San Luis	-	-	-	-
XIV	Cuenca Sal	-	-	-	-
XV	Others	-	-	-	-
National		72,1	66,1	71,2	58,0

Sunflower Flowerbud Stage: as of November 22, 2017

Regions		November 23, 2016 %	November 8, 2017 %	November 22, 2017 %	2012/2017 Average %
I	NOA	-	-	-	-
II	NEA	100,0	80,0	100,0	99,0
III	Ctro N Cba	-	-	-	-
IV	S Cba	-	-	-	-
V	Ctro N SFe	92,0	62,0	90,0	89,0
VI	Núcleo Norte	-	-	-	-
VII	Núcleo Sur	-	-	-	-
VIII	Ctro E ER	-	-	-	-
IX	N LP-OBA	-	-	-	-
X	Ctro Bs As	-	-	-	-
XI	SO BA-S LP	-	-	-	-
XII	SE BA	-	-	-	-
XIII	San Luis	-	-	-	-
XIV	Cuenca Sal	-	-	-	-
XV	Others	-	-	-	-
National		36,3	37,8	39,9	27,7

CROP CONDITION & DEVELOPMENT STAGES

Sunflower Flowering Stage: as of November 22, 2017

Regions		November 23, 2016 %	November 8, 2017 %	November 22, 2017 %	2012/2017 Average %
I	NOA	-	-	-	-
II	NEA	87,0	53,0	85,0	83,3
III	Ctro N Cba	-	-	-	-
IV	S Cba	-	-	-	-
V	Ctro N SFe	60,0	18,0	55,0	58,5
VI	Núcleo Norte	-	-	-	-
VII	Núcleo Sur	-	-	-	-
VIII	Ctro E ER	-	-	-	-
IX	N LP-OBA	-	-	-	-
X	Ctro Bs As	-	-	-	-
XI	SO BA-S LP	-	-	-	-
XII	SE BA	-	-	-	-
XIII	San Luis	-	-	-	-
XIV	Cuenca Sal	-	-	-	-
XV	Others	-	-	-	-
National		27,7	20,0	29,7	20,8

Sunflower Seed Development: as of November 22, 2017

Regions		November 23, 2016 %	November 8, 2017 %	November 22, 2017 %	2012/2017 Average %
I	NOA	-	-	-	-
II	NEA	47,0	-	45,0	50,4
III	Ctro N Cba	-	-	-	-
IV	S Cba	-	-	-	-
V	Ctro N SFe	15,0	-	15,0	14,0
VI	Núcleo Norte	-	-	-	-
VII	Núcleo Sur	-	-	-	-
VIII	Ctro E ER	-	-	-	-
IX	N LP-OBA	-	-	-	-
X	Ctro Bs As	-	-	-	-
XI	SO BA-S LP	-	-	-	-
XII	SE BA	-	-	-	-
XIII	San Luis	-	-	-	-
XIV	Cuenca Sal	-	-	-	-
XV	Others	-	-	-	-
National		12,2	-	15,0	10,1

CROP CONDITION & DEVELOPMENT STAGES

Sunflower Mature: as of November 22, 2017

Regions	November 23, 2016 %	November 8, 2017 %	November 22, 2017 %	2012/2017 Average %
I NOA	-	-	-	-
II NEA	7,0	-	5,0	10,0
III Ctro N Cba	-	-	-	-
IV S Cba	-	-	-	-
V Ctro N SFe	2,0	-	-	5,0
VI Núcleo Norte	-	-	-	-
VII Núcleo Sur	-	-	-	-
VIII Ctro E ER	-	-	-	-
IX N LP-OBA	-	-	-	-
X Ctro Bs As	-	-	-	-
XI SO BA-S LP	-	-	-	-
XII SE BA	-	-	-	-
XIII San Luis	-	-	-	-
XIV Cuenca Sal	-	-	-	-
XV Others	-	-	-	-
National	1,8	-	1,2	2,3

Corn

Early Corn Planted: as of November 22, 2017

Regions	November 23, 2016 %	November 8, 2017 %	November 22, 2017 %	2012/2017 Average %
I NOA	-	-	-	-
II NEA	-	-	-	-
III Ctro N Cba	100,0	100,0	100,0	100,0
IV S Cba	100,0	100,0	100,0	100,0
V Ctro N SFe	100,0	100,0	100,0	100,0
VI Núcleo Norte	100,0	100,0	100,0	100,0
VII Núcleo Sur	100,0	100,0	100,0	100,0
VIII Ctro E ER	100,0	100,0	100,0	100,0
IX N LP-OBA	100,0	100,0	100,0	100,0
X Ctro Bs As	100,0	95,0	100,0	100,0
XI SO BA-S LP	100,0	80,0	95,0	98,4
XII SE BA	100,0	75,0	95,0	91,7
XIII San Luis	100,0	100,0	100,0	97,0
XIV Cuenca Sal	100,0	100,0	100,0	98,0
XV Others	100,0	100,0	100,0	90,0
National	82,3	64,7	66,2	90,1

CROP CONDITION & DEVELOPMENT STAGES

Early Corn Condition: as of November 22, 2017

Regions	Very Poor %	Poor %	Fair %	Good %	Excellent %
I NOA	-	-	-	-	-
II NEA	-	-	-	-	-
III Ctro N Cba	-	-	14,3	85,7	-
IV S Cba	-	12,5	12,5	50,0	25,0
V Ctro N SFe	-	14,3	30,0	55,7	-
VI Núcleo Norte	-	22,2	33,3	33,3	11,2
VII Núcleo Sur	-	-	-	62,5	37,5
VIII Ctro E ER	-	-	-	-	-
IX N LP-OBA	-	-	10,0	78,0	12,0
X Ctro Bs As	-	8,0	15,0	70,0	7,0
XI SO BA-S LP	-	-	-	-	-
XII SE BA	-	-	-	-	-
XIII San Luis	-	-	6,0	83,0	11,0
XIV Cuenca Sal	-	-	-	-	-
XV Others	-	-	-	-	-
National	-	7,6	17,0	60,9	14,5

Early Corn Moisture Condition: as of November 22, 2017

Regions	Dry %	Poor %	Favourable %	Optimum %	Wet %
I NOA	-	-	-	-	-
II NEA	-	-	-	-	-
III Ctro N Cba	-	57,1	42,9	-	-
IV S Cba	12,5	75,0	12,5	-	-
V Ctro N SFe	-	14,3	57,1	28,6	-
VI Núcleo Norte	-	55,6	33,3	11,1	-
VII Núcleo Sur	-	50,0	25,0	25,0	-
VIII Ctro E ER	-	-	-	-	-
IX N LP-OBA	-	-	57,1	42,9	-
X Ctro Bs As	-	-	50,0	33,3	16,7
XI SO BA-S LP	-	-	-	-	-
XII SE BA	-	-	-	-	-
XIII San Luis	-	-	50,0	50,0	-
XIV Cuenca Sal	-	-	-	-	-
XV Others	-	-	-	-	-
National	0,9	33,4	42,5	21,4	1,8

CROP CONDITION & DEVELOPMENT STAGES

Early Corn Leaf Development: as of November 22, 2017

Regions	November 23, 2016 %	November 8, 2017 %	November 22, 2017 %	2012/2017 Average %
I NOA	-	-	-	-
II NEA	-	-	-	-
III Ctro N Cba	100,0	97,0	100,0	100,0
IV S Cba	100,0	98,0	100,0	100,0
V Ctro N SFe	100,0	100,0	100,0	100,0
VI Núcleo Norte	100,0	100,0	100,0	98,0
VII Núcleo Sur	100,0	100,0	100,0	100,0
VIII Ctro E ER	-	-	-	-
IX N LP-OBA	100,0	88,9	100,0	100,0
X Ctro Bs As	100,0	75,0	98,0	100,0
XI SO BA-S LP	-	-	-	-
XII SE BA	-	-	-	-
XIII San Luis	100,0	99,0	100,0	100,0
XIV Cuenca Sal	-	-	-	-
XV Others	-	-	-	-
National	99,8	91,8	97,7	97,7

Early Corn Pollination: as of November 22, 2017

Regions	November 23, 2016 %	November 8, 2017 %	November 22, 2017 %	2012/2017 Average %
I NOA	-	-	-	-
II NEA	-	-	-	-
III Ctro N Cba	-	-	-	15,0
IV S Cba	25,0	-	12,0	30,0
V Ctro N SFe	53,0	15,0	51,0	74,0
VI Núcleo Norte	29,0	6,7	17,0	33,2
VII Núcleo Sur	11,0	-	-	16,0
VIII Ctro E ER	-	-	-	-
IX N LP-OBA	-	-	-	5,0
X Ctro Bs As	-	-	-	-
XI SO BA-S LP	-	-	-	-
XII SE BA	-	-	-	-
XIII San Luis	-	-	-	6,0
XIV Cuenca Sal	-	-	-	-
XV Others	-	-	-	-
National	14,5	2,6	7,6	20,1

CROP CONDITION & DEVELOPMENT STAGES

Early Corn Silking: as of November 22, 2017

Regions		November 23, 2016 %	November 8, 2017 %	November 22, 2017 %	2012/2017 Average %
I	NOA	-	-	-	-
II	NEA	-	-	-	-
III	Ctro N Cba	-	-	-	-
IV	S Cba	-	-	-	2,5
V	Ctro N SFe	20,0	-	34,3	32,0
VI	Núcleo Norte	-	-	-	9,0
VII	Núcleo Sur	-	-	-	2,0
VIII	Ctro E ER	-	-	-	-
IX	N LP-OBA	-	-	-	-
X	Ctro Bs As	-	-	-	-
XI	SO BA-S LP	-	-	-	-
XII	SE BA	-	-	-	-
XIII	San Luis	-	-	-	-
XIV	Cuenca Sal	-	-	-	-
XV	Others	-	-	-	-
National		1,0	-	1,7	5,7

Soybean

First Soybean Planted: as of November 22, 2017

Regions		November 23, 2016 %	November 8, 2017 %	November 22, 2017 %	2012/2017 Average %
I	NOA	1,0	-	-	0,4
II	NEA	2,5	-	-	2,3
III	Ctro N Cba	15,0	6,0	18,0	30,2
IV	S Cba	47,0	19,0	57,0	61,4
V	Ctro N SFe	40,0	10,0	39,0	36,8
VI	Núcleo Norte	87,0	47,0	88,0	86,9
VII	Núcleo Sur	70,0	24,5	75,0	78,6
VIII	Ctro E ER	37,0	15,0	54,0	64,4
IX	N LP-OBA	30,0	10,0	50,0	59,6
X	Ctro Bs As	43,0	10,0	30,0	62,8
XI	SO BA-S LP	18,5	0,5	15,0	38,1
XII	SE BA	37,7	2,5	30,0	56,6
XIII	San Luis	35,0	22,0	40,0	45,6
XIV	Cuenca Sal	40,0	4,0	42,0	56,5
XV	Others	55,0	30,0	48,0	45,0
National		43,1	17,0	47,9	55,2

CROP CONDITION & DEVELOPMENT STAGES

Vegetation Change detection map

The following maps were drawn based on temporal MODIS Vegetation indices, which provided time-space comparisons of the crop condition, related to the foliar area, the photosynthesis activity and to the canopy architecture.

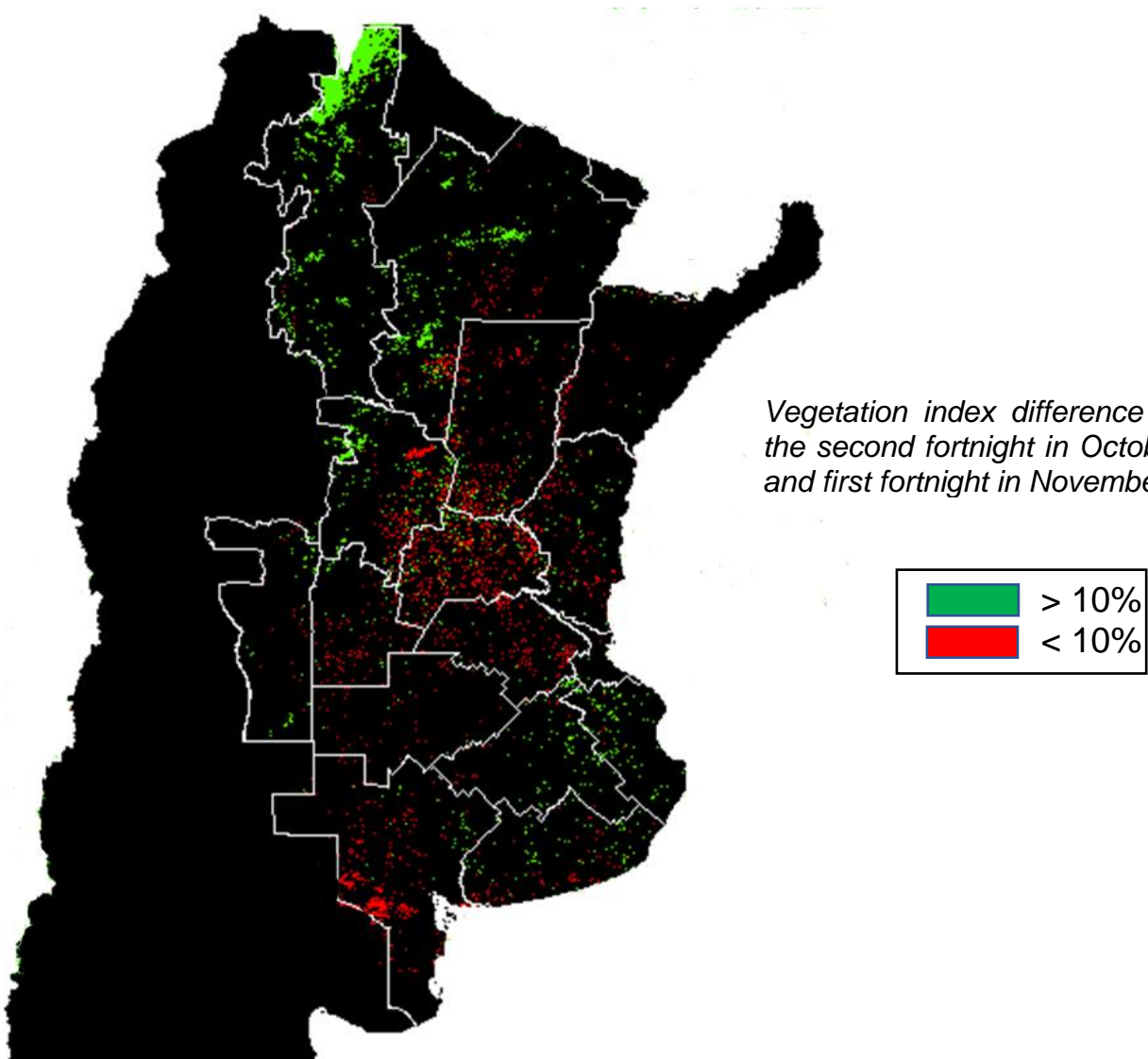
The index value may vary according to the soil use, condition and development of the vegetation cover, soil moisture and to regional climatic conditions.

These properties have turned the green index into a valuable tool for the assessment of vegetation cover, as well as for the study of the classification and dynamics of vegetation and its phenological aspect.

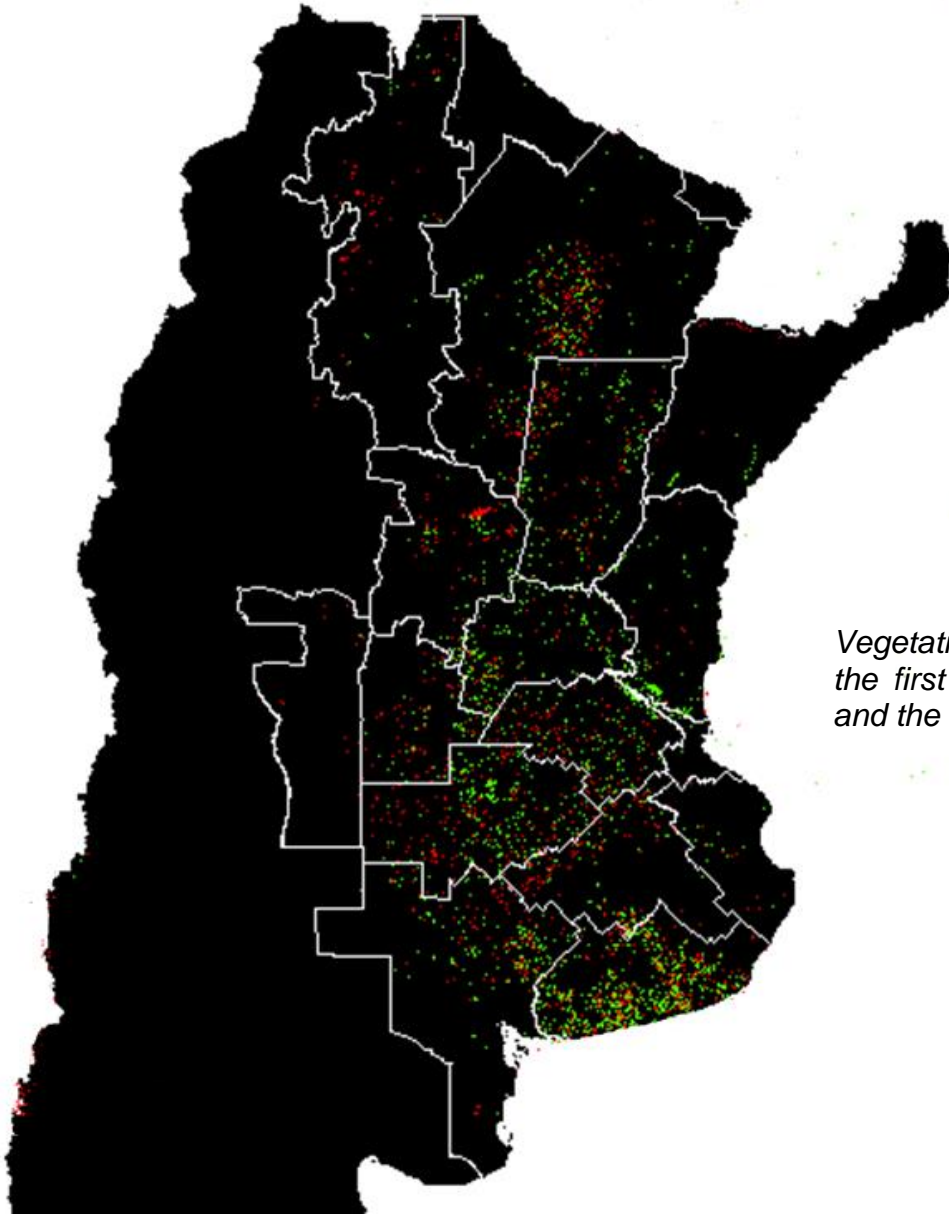
The index makes it possible to survey the places where vegetation cover is under water stress or when the crop is close to harvest, in which case, low indices of vegetations are observed. On the contrary, high vegetation index values are related to vegetation cover in active growth and good sanitary condition.

Departing from this index, fortnightly changes were detected compared to both, the same and previous season.

Red areas in maps evidence a decrease above 10% in the vegetation index, while the green areas indicate a rise above 10% of the vegetation index.



CROP CONDITION & DEVELOPMENT STAGES



Vegetation index difference between the first fortnight in November, 2017 and the same fortnight YoY

